

UNRULY VISIONS  
嘯傲之相：酷兒之影像習作

# Queer Human Library

# 酷兒真人圖書館

圖書 鄺念終 NC KWONG  
馮明心 FUNG Ming Sum  
主持 龐一鳴 PONG Yat Ming

同▼志

Qu▶▶r

鄺念終 NC KWONG

# 同志 Qu>>r





## 同志 Qu>>r - 個人習作 Class Assignment - 建構 Constructs



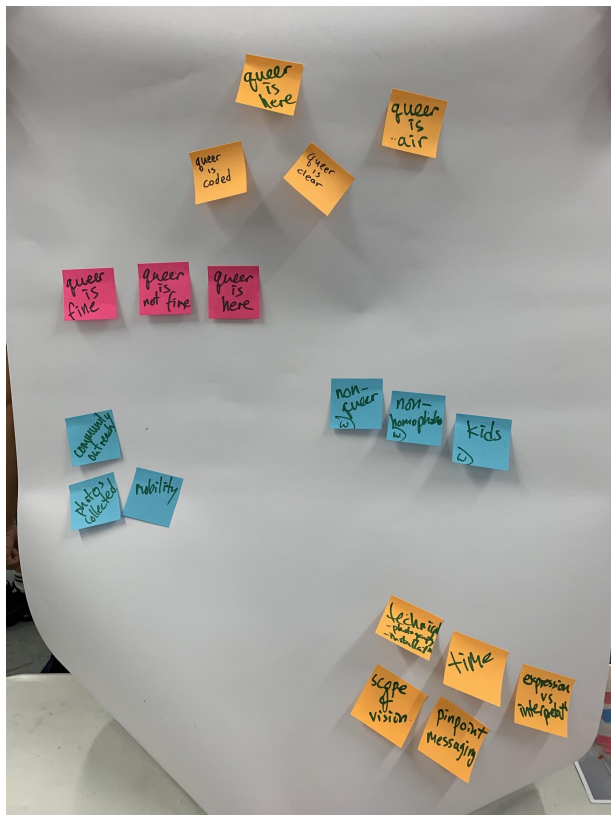




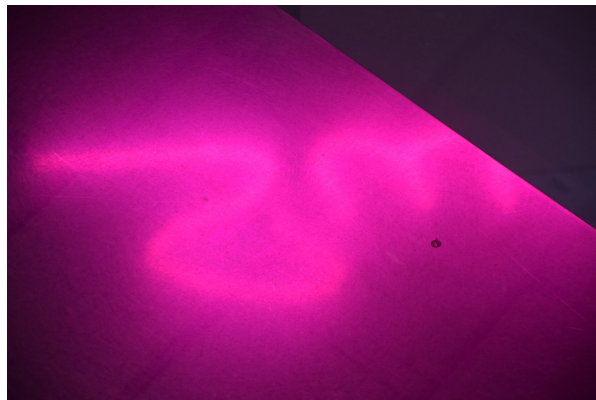
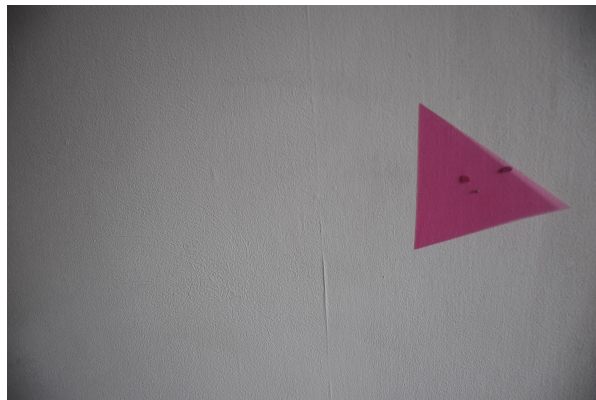
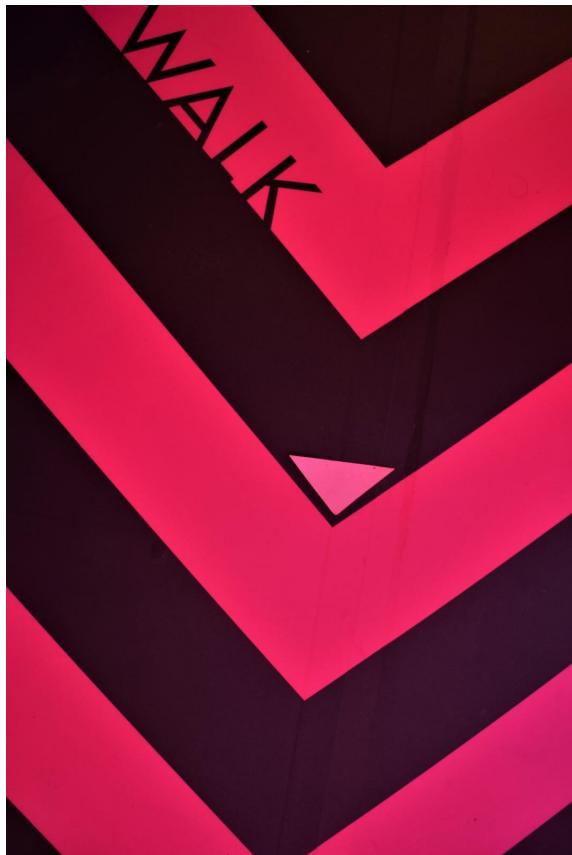
**SILENCE=DEATH**

1987  
ACT UP

## 同志 Queer - 策劃過程 Project Mapping



## 同志 Qu>>r - 探索 Trial & Error





## 同志 Qu>>r - 策劃過程 Project Mapping



1. Which photograph have you made during the time of this workshop that surprised YOU the most? you thinking about when you were making it? What were your intentions? What was the outcome?

你在工作坊期間拍攝的哪張照片最讓你感到驚訝？你拍的時候在想什麼？你的意圖是什麼？結果是什麼？

2. What do you believe photographs can do or say? What can photographs NOT do?

你認為照片可以做什麼或說什麼？照片不能做什麼？

3. Name something that you want to see / want to photograph. 說一個您想要看到 / 想要拍攝的東西。

It can be something you saw, or it can be a mental image. 它可以是你看過的東西，也可以是一個心理形象。

## 同志 Qu>>r - 探索 Trial & Error



## 同志 Qu>>r - 最後成品 Final Selection





# The Couple

馮明心 FUNG Ming Sum

# The Couple



## The Couple - 創作過程 Creating Process (1)

### 繪畫練習 Drawing Practices



1. 醫療人員 Health Professional
2. 司法人員 Judicial Officer
3. 女同志 Lesbian
4. 男同志 Gay
5. 宗教信徒 Religious Believer
6. 大學生 University Student
7. 中學生 Secondary School Student
8. 教育工作者 Educator



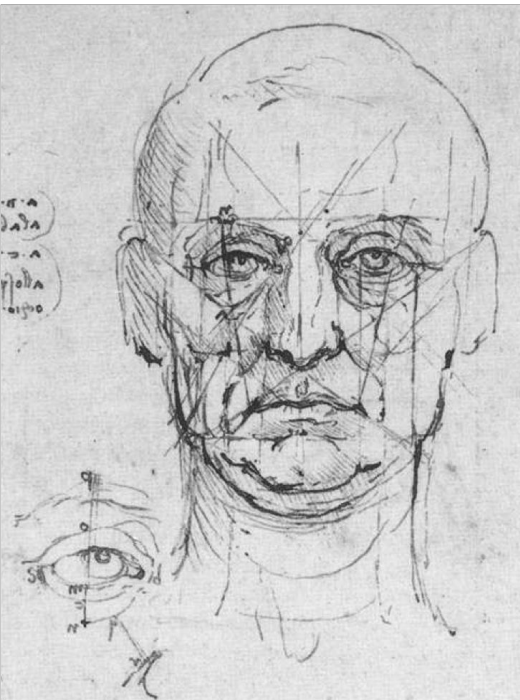
# The Couple - 創作過程 Creating Process (1)

## 繪畫練習 Drawing Practices



# The Couple - 創作過程 Creating Process (1)

## 繪畫練習 Drawing Practices



Leonardo da Vinci. Study on the proportions of head and eyes (details). Second half of 15<sup>th</sup> century. Pen and ink.  
19.7 x 16.0 cm.



Leonardo da Vinci. Male head in profile with proportions (details).  
Second half of 15<sup>th</sup> century. Pen and ink.

## The Couple - 創作過程 Creating Process (2)

### 訪問女同志 Interviewing a Lesbian



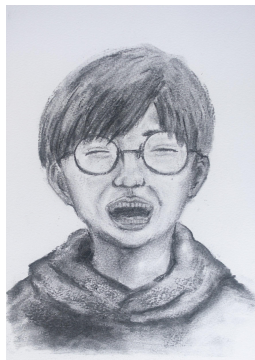


## The Couple - 創作過程 Creating Process (3)

### 繪畫 Drawing



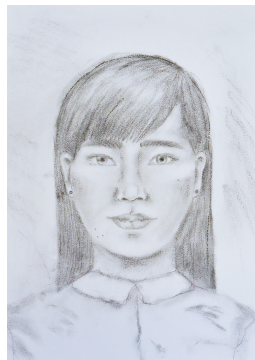
Participant 1



Participant 2



Participant 5



Participant 6



Participant 3



Participant 4



Participant 7



Participant 8



# The Couple - 最後成品 Final Work



## The Couple - 發現 Discovery

1. 性格/ 氣質 Personalities/ Gender expressions
2. 表情 Facial expressions
3. 性別 Genders
4. 「男仔頭」“Boy-like” hairstyles
5. 身材 Body figures
6. 個人看法 Personal standards
7. 「正常」“Normal”
8. 距離感 Sense of distance
9. 相似度 Similarity
10. 關係中的角色 Roles in relationship
11. 真正身份 Real identity

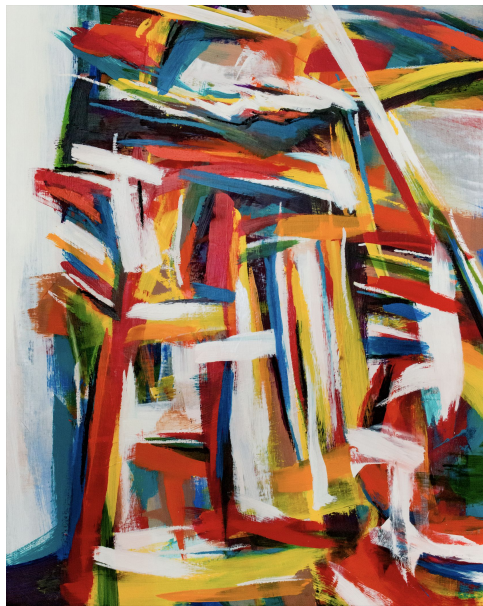
**同志 / 親密關係中的同志的多元及曖昧**

**Diversity and Ambiguity of Lesbian / Lesbian in Intimated Relationships**

## Fung Ming Sum - 以前的創作 Previous Works



It's Not A Drop of Tear. It's an Accident. 2017. Oil on linen. 200 x 150 cm.



Card Board in Ma Wan Tsuen. 2016. Oil on linen. 150 x 120 cm.



Life Drawing Notes (details). 2016-2017. Charcoal, Chinese ink and white chalk on canvas. 75 x 55 cm.